



Deliverable D1.1

All Relevant Boards established



DOCUMENT INFORMATION

PROJECT	
PROJECT ACRONYM	SoBigData-PlusPlus
PROJECT TITLE	SoBigData++: European Integrated Infrastructure for Social Mining and Big Data Analytics
STARTING DATE	01/01/2020 (48 months)
ENDING DATE	31/12/2023
PROJECT WEBSITE	http://www.sobigdata.eu
TOPIC	INFRAIA-01-2018-2019 Integrating Activities for Advanced Communities
GRANT AGREEMENT N.	871042

DELIVERABLE INFORMATION	
WORK PACKAGE	WP1 - Management
WORK PACKAGE LEADER	CNR
WORK PACKAGE PARTICIPANTS	All
DELIVERABLE NUMBER	D1.1
DELIVERABLE TITLE	All Relevant Boards established
AUTHOR(S)	Valerio Grossi (CNR), Fosca Giannotti (CNR), Kalina Bontheva (USFD), Dino Pedreschi (UNIFI)
CONTRIBUTOR(S)	
EDITOR(S)	Valerio Grossi (CNR)
REVIEWER(S)	
CONTRACTUAL DELIVERY DATE	01/04/2020
ACTUAL DELIVERY DATE	05/05/2020
VERSION	1.0
TYPE	Report
DISSEMINATION LEVEL	Public
TOTAL N. PAGES	14
KEYWORDS	Key project roles, management, boards

EXECUTIVE SUMMARY

This deliverable outlines the definition of the composition and installation of the boards involved in the project's management. On the one hand, it describes the key project roles and project management structures. On the other hand, this document lists the name of the members for each established board.

DISCLAIMER

This project has received funding from the European Union's Horizon 2020 research and innovation programme under grant agreement No 871042.

SoBigData++ strives to deliver a distributed, Pan-European, multi-disciplinary research infrastructure for big social data analytics, coupled with the consolidation of a cross-disciplinary European research community, aimed at using social mining and big data to understand the complexity of our contemporary, globally-interconnected society. SoBigData++ is set to advance on such ambitious tasks thanks to SoBigData, the predecessor project that started this construction in 2015. Becoming an advanced community, SoBigData++ will strengthen its tools and services to empower researchers and innovators through a platform for the design and execution of large-scale social mining experiments.

This document contains information on SoBigData++ core activities, findings and outcomes and it may also contain contributions from distinguished experts who contribute as SoBigData++ Board members. Any reference to content in this document should clearly indicate the authors, source, organisation and publication date.

The content of this publication is the sole responsibility of the SoBigData++ Consortium and its experts, and it cannot be considered to reflect the views of the European Commission. The authors of this document have taken any available measure in order for its content to be accurate, consistent and lawful. However, neither the project consortium as a whole nor the individual partners that implicitly or explicitly participated the creation and publication of this document hold any sort of responsibility that might occur as a result of using its content.

Copyright © The SoBigData++ Consortium 2020. See <http://www.sobigdata.eu/> for details on the copyright holders.

For more information on the project, its partners and contributors please see <http://project.sobigdata.eu/>. You are permitted to copy and distribute verbatim copies of this document containing this copyright notice, but modifying this document is not allowed. You are permitted to copy this document in whole or in part into other documents if you attach the following reference to the copied elements: "Copyright © The SoBigData++ Consortium 2020."

The information contained in this document represents the views of the SoBigData++ Consortium as of the date they are published. The SoBigData++ Consortium does not guarantee that any information contained herein is error-free, or up to date. THE SoBigData++ CONSORTIUM MAKES NO WARRANTIES, EXPRESS, IMPLIED, OR STATUTORY, BY PUBLISHING THIS DOCUMENT.

GLOSSARY

EU	European Union
EC	European Commission
H2020	Horizon 2020 EU Framework Programme for Research and Innovation
PC	Project Coordinator
PM	Project Manager
PMT	Project Management Team
PSB	Project Steering Board
PMB	Project Management Board
TL	Task Leaders
GA	General Assembly
TMB	Transnational Access (TA) Management Board
BOEL	Board for Operational Ethics and Legality
HLAB	High-Level Advisories Board
PAB	Project Advisory Board

TABLE OF CONTENTS

1	Relevance to SoBigData++	7
1.1	Purpose of this document	7
1.2	Relevance to project objectives	7
1.3	Relation to other work packages.....	7
1.4	Structure of the document.....	7
2	SoBigData++ management structure.....	8
2.1	Key management roles.....	9
2.2	Management bodies	9
3	Relevant Boards established.....	12
4	Conclusions	14

1 Relevance to SoBigData++

1.1 Purpose of this document

This deliverable provides a description of all relevant boards established into the SoBigData++ project. It defines the key roles inside the project and the role of each board expected in the project. Moreover, it provides the name of the actual members inside every board.

1.2 Relevance to project objectives

This deliverable introduces a full description of the SoBigData++ management structures and all the established boards. All boards are relevant for project management and the project objectives.

1.3 Relation to other work packages

This document defines all the relevant boards for the management of the SoBigData++ project. The information available in this document are in relation to the overall project organization and then to all the work packages. This deliverable is defined inside WP1, which aims at ensuring a robust and efficient day-to-day management of the project in order to reach its objectives on time and within budget constraints. Furthermore, WP1 focuses on ensuring the administrative and financial management of the project. It develops a cooperation spirit between partners, enables smooth work progress; ensuring project reporting, and it is an interface with the European Commission (managing and assuring compliance with the Commission's reporting requirements).

1.4 Structure of the document

This deliverable has the following structure: Section 2 proposes an overview of the project management structure. It introduces the SoBigData++ key management roles and all the management bodies. Section 3 defines all relevant boards established at the beginning of the project, including the name of the members (and their affiliation) for every established board.

2 SoBigData++ management structure

The activities inside SoBigData++ are organized along the main three axes: community building (including innovation and networking activities); social mining research infrastructure building, and user accessibility through virtual and transnational access (Figure 1). The related tasks are organized into 10 work packages (WPs), and each WP is led by investigator/researchers with an established track record and substantial experience in running projects of this scale. It is a deliberate design choice to have a mix of senior researchers and younger ones in the increasing stage of their careers, to blend experience and enthusiasm.

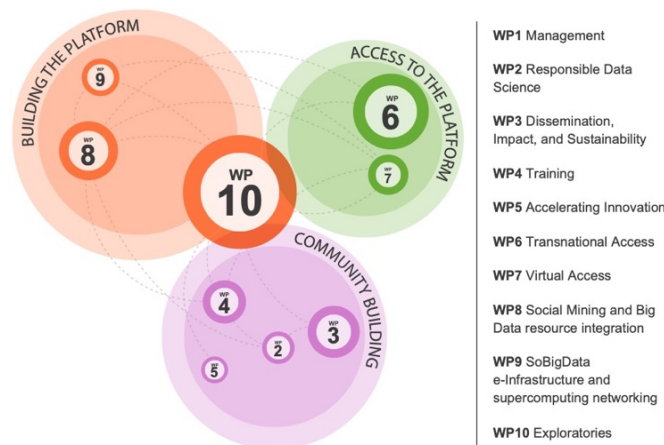


Figure 1. SoBigData++ work packages and their application areas

Figure 2 shows the SoBigData++ management structure. All management bodies are designed for accurate and timely implementation of the activities that are undertaken in the project. The management structure secures the coordination and integration of these activities towards the SoBigData objectives of the project and helps to reach the desired synergistic effect across the partners.

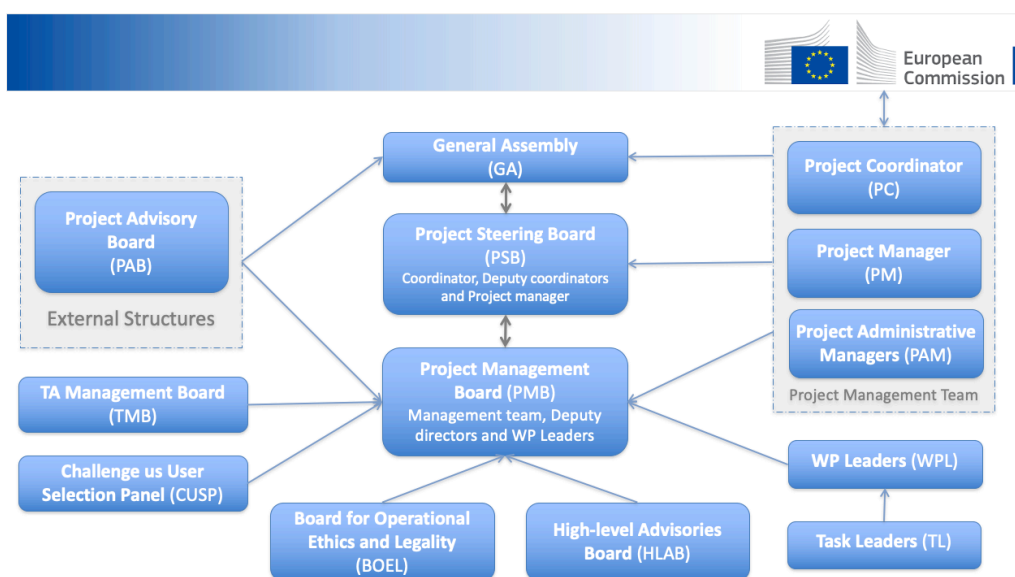


Figure 2. The SoBigData++ management structure

2.1 Key management roles

This section introduces the key management roles expected in SoBigData++. The project defined four key roles:

- The **Project Coordinator (PC)**, *Fosca Giannotti*, director of research at CNR, is in charge of the overall scientific coordination and project implementation, as well as administration. The coordinator is the contact person for all interaction and communication with the European Commission and all legal aspects, monitoring the implementation and progress as well as the achievements of the project and reporting to the Commission. The PC acts as chair of the Project Management Board, the Project Steering Board, and the Project Management Team. Two deputy coordinators assist the PC: *Kalina Bontcheva* (USFD) and *Dino Pedreschi* (UNIFI).
- The **Project Manager (PM)** reports to the PC and is responsible for administrative management tasks (organization of meetings and events, preparation of reports, monitoring and maintaining the content on the website, facilitating communication within the consortium, and preparing publicity materials). The PM is responsible for resolving financial and other administrative issues and monitoring the completion of technical and business objectives. The PM also participates in facilitating dissemination and training activities in collaboration with the responsible WP leaders. The PM is *Roberto Trasarti* (CNR). The PM is supported by Project Administrative Managers (PAM), *Chiara Falchi* (CNR) and *Valerio Grossi* (CNR) for monitoring and checking reporting and communication activities and for resolving financial and other administrative issues, taking care of the reporting on SyGMA portal supervising the activity of the overall consortium and interacting with the central administration of CNR.
- The **Work Package Leaders** are key investigators who manage and monitor the scientific and technical objectives, deliverables and milestones of their respective work package, and report to the Project Management Board. WP Leaders are responsible for maintaining an archive of documents, including draft documents, deliverables, and meeting minutes, which are stored in the private area of the project website. The names of the WP Leaders are available in Table 1.
- The **Task Leaders (TL)** are investigators who manage and monitor the scientific and technical objectives, effort expenditure, deliverables, and milestones of their respective tasks. The names of task leaders are managed by WP leaders, and they are not reported here for two main reasons some tasks will start at the beginning of the second year of the project, and this list is considered more flexible and subjected to changes during the project.

2.2 Management bodies

This section reports the central management bodies responsible for the strategic direction, management, and project administration.

- The **Project Management Team (PMT)** provides a smart management structure that monitors the progress and quality of the project and resources. The PMT consists of the Project Coordinator and the Project Manager, supported by the CNR European Office (LEAR). The Project Coordinator can co-opt into the PMT other representatives as necessary to assist PC in the day-to-day running of the project.
- The **Project Steering Board (PSB)** is composed of the Project Coordinator (chair), the Project Manager, and the two deputy project coordinators. Its primary focus is on operationalizing the **scientific vision** of the project issues. The PSB is a smaller body than the Project Management Board and is more flexible to meet whenever either the Project Coordinator or a member of the Project Management Board considers this necessary to ensure focused and flexible action. The PSB regularly discusses scientific progress, dissemination, intellectual property rights, exploitation, legal, ethical, and regulatory issues and measures to be tabled to consortium bodies.
- The **Project Management Board (PMB)** comprises the Project Coordinator, the Project Manager and the WP Leaders. This board is the primary executive decision-making body. Each area of work discusses the specifics of their technical input, progress, and effort expenditure within their respective work packages and the PMB balances these inputs, along practical lines, within the overall technical direction agreed in the original Description of Work. Ethics and Gender issues are also monitored by the PMB.
- The **General Assembly (GA)**. All the partners have a member in the GA (one person = vote per partner). The Coordinator acts as chair. The GA decides on: the yearly technical and financial plan, the plan for use and dissemination, the strategy and procedure for publications, the Training Programme. All beneficiaries are invited to participate in the meeting and to ask questions, give advice, and propose actions. The GA plays a key role in assessing and deciding whether milestones have been achieved.
- The **Transnational Access (TA) Management Board (TMB)** is led by *Kalina Bontcheva* (USFD) with the involvement of all WP6 partners. The TMB is responsible for the call publication, advertising, the financial management of the resources, and for setting up the international User Selection Panel (USP). The USP assigns the management of costs for each visitor to one of the three fund managers: USFD, EGI, or UT.
- The **Board for Operational Ethics and Legality (BOEL)** and the **High-Level Advisories Board (HLAB)** are described and defined in deliverable *D.2.1 Ethics and Legality Board Establishment*. In particular, HLAB is chaired by J. van den Hoven, professor of ethics at TUDelft, while Professor Dr. Tina Krügel, IT law professor at LUH and Giovanni Comandé, a legal informatics professor at Scuola Superiore Sant'Anna, act as board Vice Chairs and legal counsels.
- The **Project Advisory Board (PAB)** comprises recognized experts of international standing from a range of academic and non-academic organizations. Members are senior researchers, business executives, educators, and decision-makers from both technical and non-technical backgrounds. The PAB reviews selected reports and attend meetings to offer the project the benefit of their domain

and technical expertise and help position the technical advances of the project in a wider scientific and commercial context. The PAB will meet at least three times during the project. At the moment, the members who already accepted, preliminarily¹, to be part of the board are:

- *Katharina Morik*, University of Dortmund, Machine Learning Expert, full professor for computer science at the TU Dortmund University. She is a member of the National Academy of Science and Engineering and the North-Rhine-Westphalia Academy of Science and Art.
 - *Ann Cavoukian*, Ontario's former privacy commissioner.
 - *Alex (Sandy) Pentland*, director of the MIT Connection Science and Human Dynamics labs and previously helped create and direct the MIT Media Lab and the Media Lab Asia in India
 - *Anastasia Ailamaki*, professor at the École Polytechnique Fédérale de Lausanne in Switzerland, leader of the Data-Intensive Applications and Systems Laboratory at EPFL.
 - *Patrick Gatellier*, AI R&D expert at Thales and coordinator of AI4EU <https://www.ai4eu.eu/>
 - *David Lazer*, distinguished professor of political science and computer and information science at Northeastern University, co-director of the NULab of Texts, Maps, and Networks.
 - *Giovanni Sartor*, a professor in Legal Informatics at the University of Bologna and the European University Institute of Florence.
 - *Yücel Saygın*, professor of Computer Science at the Faculty of Engineering and Natural Sciences at Sabanci University in Turkey. He is currently a member of the Electrical, Electronic, and Informatics Executive Board of the Scientific and Technological Research Council of Turkey.
-
- The **Challenge US user Selection Panel (CUSP)** is selected by the task leader of T5.2² and has the responsibility of defining the criteria for selecting the challenge to be addressed in each edition of the program.

¹ The definitive list of the PAB members will be published into SoBigData++ Project site.

² Task T5.2 - Challenge Us Programme starts at M13.

3 Relevant Boards established

The following tables report the list of the names of the people selected to be part of the SoBigData++ boards. In particular, Table 1 lists the members of the Project Management Board that includes the Project Coordinator (and deputy coordinators), the Project Manager, and the WP Leaders.

Table 2 reports transnational access board members. We recall that SoBigData++ includes 26 installations, i.e., sites/laboratories that can be visited by the winner applicants of transnational access call. The table reports the principal investigators, one for each installation. Furthermore, we recall that EGI or UT are involved in the transnational access for managing the reimbursement for each visitor.

Table 3 outlines all the members selected for the General Assembly. Each partner has selected one person as a representative contact, and each member has a vote. If a member cannot be part of a meeting, she/he can delegate someone else by written communication to the coordinator.

	<i>WP</i>	<i>Lead Beneficiary</i>	<i>WP Leader</i>
1	WP1 - Management	CNR	Fosca Giannotti (PC)
2	WP1 - Management (as deputy coordinators)	UNIFI	Dino Pedreschi
3	WP2 - Responsible Data Science	TU Delft	Jeroen van den Hoven
4	WP3 - Dissemination, Impact, and Sustainability	USFD	Kalina Bontcheva
5	WP4 - Training	KCL	Mark Cotè
6	WP5 - Accelerating Innovation	SSSA	Nicola Del Sarto
7	WP6 - Transnational Access	USFD	Kalina Bontcheva
8	WP7 - Virtual Access	CNR	Roberto Trasarti (PM)
9	WP8 - Social Mining and Big Data Resource Integration	LUH	Avishek Anand
10	WP9 - e-Infrastructure and Supercomputing Network	CNR	Pasquale Pagano
11	WP10 - Exploratories	KTH	Aristides Gionis

Table 1. List of Project Management Board members and their affiliation

	<i>Installation</i>	<i>Lead Beneficiary</i>	<i>Principal Investigator</i>
1	CNR-TA	CNR	Fosca Giannotti
2	GATE-TA	USFD	Kalina Bontcheva
3	UNIPI-TA	UNIPI	Dino Pedreschi
4	IMT-TA	IMT	Guido Caldarelli
5	L3S-TA	LUH	Avishek Anand
6	SNS-TA	SNS	Fabrizio Lillo
7	AALTO-TA	AALTO	Kimmo Kaski
8	ETHZ-TA	ETHZ	Nino Antulov-Fantulin
9	PSE-TA	PSE	Hillel Rapoport
10	SAP-TA	UNIROMA1	Stefano Leonardi
11	CEU-TA	CEU	János Kertész
12	URV-TA	URV	Josep Domingo-Ferrer
13	BSC-TA	BCS	Dario Garcia-Gasulla
14	UPF-TA	UPF	Carlos Castillo
15	KTH-TA	KTH	Aristides Gionis
16	UvA-TA	Uva	Richard Rogers

Table 2. Transnational Access Management Board members

	Partner	Member		Partner	Member
1	CNR	Fosca Giannotti	17	CNRS	Tommaso Venturini
2	USFD	Kalina Botcheva	18	RIE	Erika Widegren
3	UNIPI	Dino Pedreschi	19	CEU	János Kertész
4	FRH	Gennady Andrienko	20	URV	Josep Domingo-Ferrer
5	UT	Marlon Dumas	21	CSD	Todor Galev
6	IMT	Guido Caldarelli	22	BSC	Dario Garcia-Gasulla
7	LUH	Avishek Anand	23	UPF	Carlos Castillo
8	KCL	Mark Cotè	24	KTH	Aristides Gionis
9	SNS	Fabrizio Lillo	25	UAQ	Antinisca di Marco
10	AALTO	Kimmo Kaski	26	Eli	Chiara Vona
11	ETHZ	Dirk Helbing	27	CRA	Emma Greer
12	TU Delft	Jeroen van den Hoven	28	Nubisware	Marco Lettere
13	EGI	Enol Fernández	29	UvA	Richard Rogers
14	PSE	Hillel Rapoport	30	STACC	Kalev Koppel
15	UNIROMA1	Stefano Leonardi	31	SSSA	Andrea Piccaluga
16	OpenAIRE	Natalia Manola			

Table 3. General Assembly members and their affiliation

4 Conclusions

This document reported the main boards for enabling an accurate and timely implementation of the SoBigData++ project. Furthermore, it described the overall management structures highlighting the interaction among the roles and boards.